

WHAT IS IN IT FOR YOU?

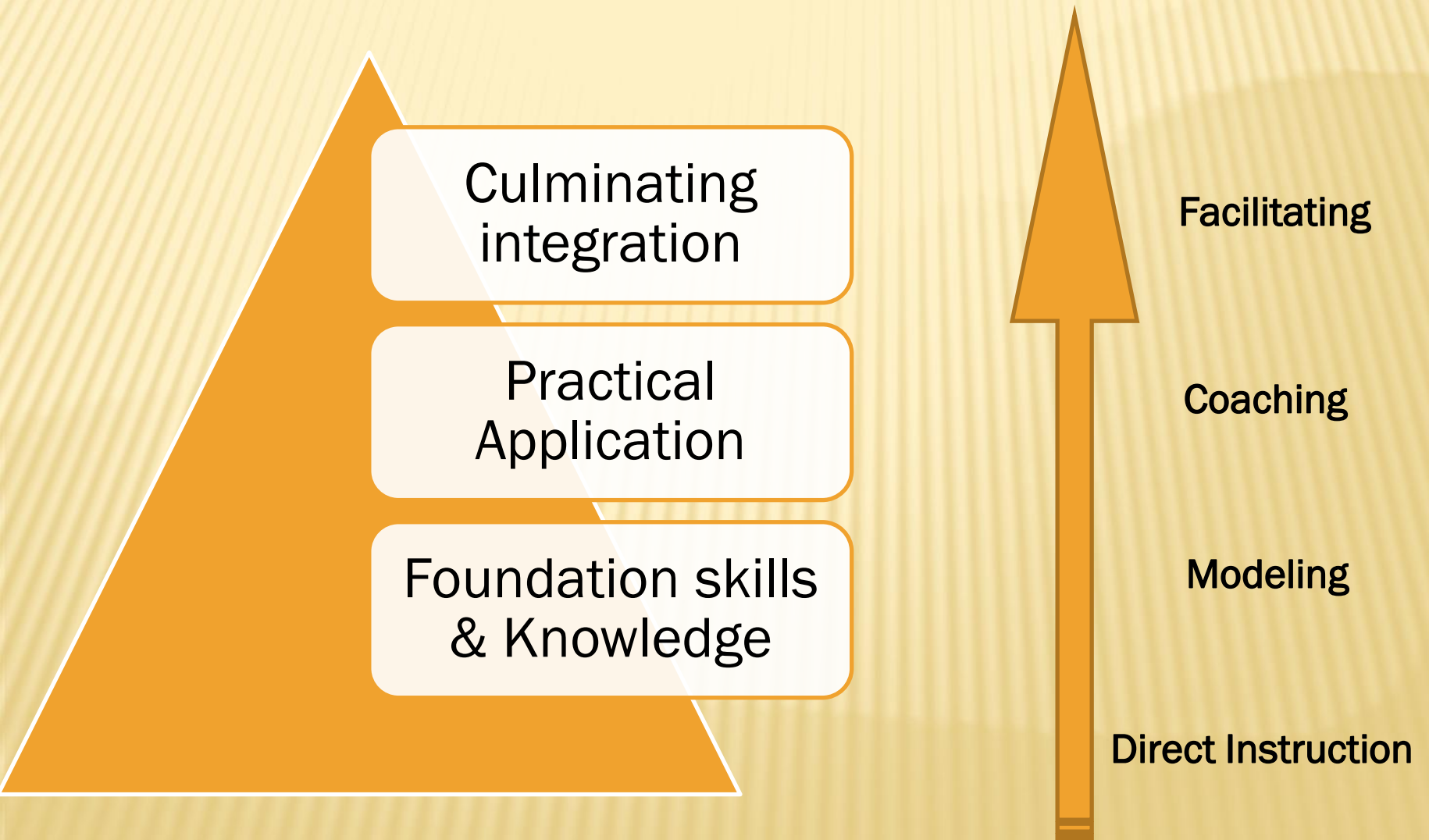
**BEFORE 2ND YR AT LEAST – GO THRU THESE
SLIDES IN PHARM D.**

Orientation Program for II Pharm. D

LEARNING STAGES



LEARNING PYRAMID



Culminating
integration

Practical
Application

Foundation skills
& Knowledge

Facilitating

Coaching

Modeling

Direct Instruction



STRATEGIC PLAN PHARM D

VISION:

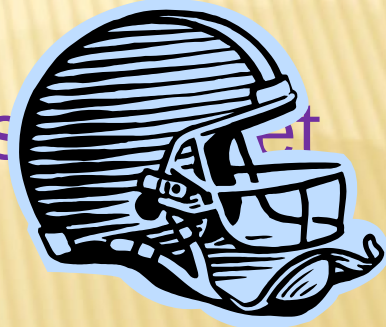
To evolve the best clinical pharmacists who can be healthcare team synergists with patient care as the ultimate motto.

MISSION:

- ❑ Impart the best academic Knowledge & skills
 - ❑ Foster practical application of knowledge
- ❑ Equip & Develop Practicing pharmacists with up-to-date advancements
- ❑ Inculcate passion for being an active & involved Pharmacist in healthcare team

PRIORITIES

- ❑ Produce skilled pharmacy practitioners to meet the professional & societal challenges
- ❑ Involve the stake holders in pharmacy teaching in Community healthcare programmes – Both Screening & Promotion
- ❑ Dual assessment – Self & staff for the trainee to-be pharmacists
- ❑ Self Development programs



OUTCOMES @ COURSE COMPLETION

- ❑ Patient centered carer (**Caregiver**)
- ❑ Medication use manager (**Manager**)
- ❑ Health & Wellness **promoter**
- ❑ Population based care **provider**



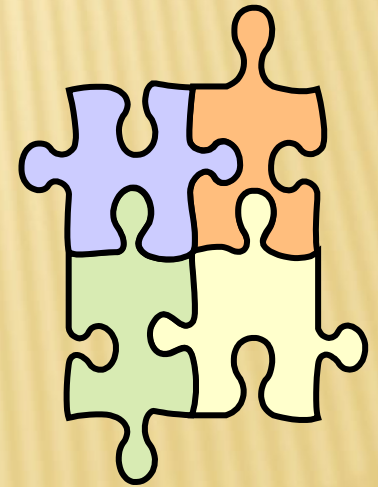
QUALITIES TO BE DEVELOPED

- ❑ Problem solver
- ❑ Inter professional collaborator
- ❑ Social welfare abilities
- ❑ Communicator



ROLE OF TEACHERS

- ✘ Role model – Person,
- ✘ Professional – Pharmacist,
- ✘ Friend – Supervisor,
- ✘ Learner - Teacher



EQUIP YOURSELF

- ❑ Latest CIMS
- ❑ Medical Dictionary
- ❑ Stethoscope & Digital thermometer
- ❑ Sphygmomanometer manual

GETTING STARTED

- ❑ **List of abbreviations** used in medical practice and their expansions/ explanations – A hand written document with your name on right top corner
- ❑ Download all the university question papers of the past & have a syllabus copy handy.

CLINICAL PHARMACY ACTIVITIES

- × DATA
- × SOAP
- × DIC
- × ADR
- × DRP
- × MA
- × DI
- × COUNSELING

COMMUNITY PHARMACY ACTIVITIES

- ❑ WORLD DAYS
- ❑ Health screening
- ❑ Health Promotion
- ❑ Awareness
- ❑ Other creatives

INFORMATION SERVICES

- ❑ DIC
- ❑ NOTICE BOARD
- ❑ PHARMAYAN
- ❑ JOURNAL CLUB

ASK DEVELOPMENT

- ❑ Personality Development program
- ❑ Seminars by Clinicians
- ❑ Journal Club
- ❑ Emergency response skills
- ❑ Health screening
- ❑ Health promotion
- ❑ Case discussion
- ❑ Clinical activities & Community activities compilation

DISCIPLINE IS THE FIRST LESSON

- ❑ Timeliness
- ❑ Participation
- ❑ Presentability
- ❑ Formal dressing(Uniform & ID Card)
- ❑ In Campus behaviour
- ❑ Complaint free profile

INTRODUCTION

- ❑ TEAM WISE INTRO TO THE CLASS
- ❑ INDIVIDUAL INTRO TO THE CLASS
- ❑ BRING IN THE INTRO FORM
- ❑ EXPRESS YOURSELF

IN FRONT OF US

- ❑ Points monitor
- ❑ Alcohol & Smoking de addiction programmes
- ❑ Feedback box
- ❑ Notice board
- ❑ Attendance monitor
- ❑ Assignments monitor for Pathophysiology & Pharmacotherapeutics

ANALOGIES

- ❑ What is your BMI?
- ❑ Formula : $BMI = \text{Wt. in Kgs.} / (\text{Ht. in meter})^2$
- ❑ The bull shit & ostrich

THANK YOU

- QUESTIONS?
 - Feedback?
- Socrates and the pain of death!
 - Participants felicitation
- DON'T DO THESE FOR WE WANT YOU TO DO!
- DO IF YOU WANT TO OR EXIST & PERISH TO
THE NATURAL COURSE